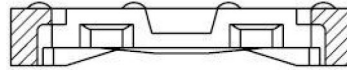
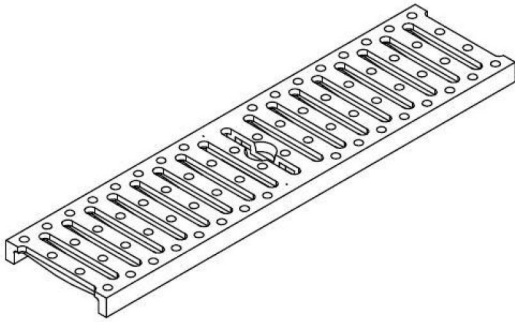
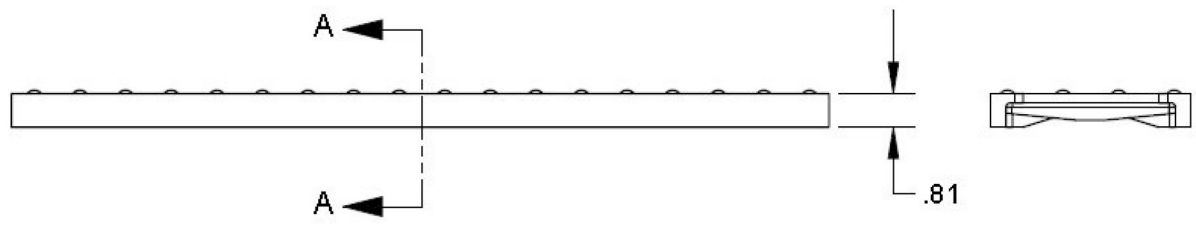
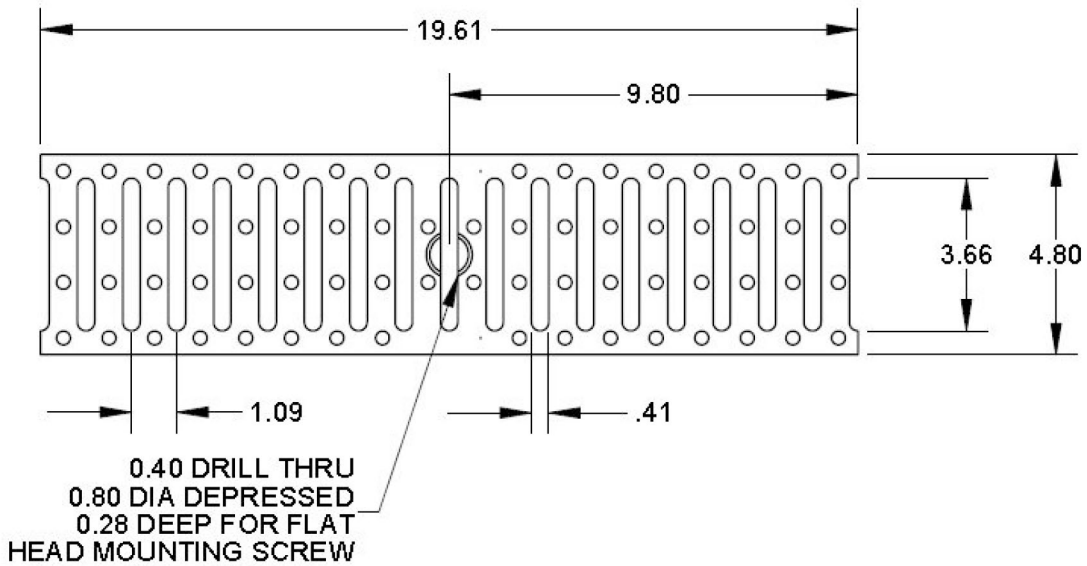



Number 152411	Series 152411 C Ductile Iron Slotted 1000 Series Grates
------------------------------------	--



SECTION A-A
SCALE 1 : 2



Manufacturer



Quality engineered trench drain system

Specification

MEA 152411 DUCTILE IRON SLOTTED GRATE, DESIGNED TO FIT 100 AND 1000 SERIES CHANNELS. MEETS CLASS C LOADING REQUIREMENTS (56,000 LBS - 1,162 PSI)